



Outdoor/Indoor Electric Infrared Heater

DSH Series



Radiant heat with style
and performance.

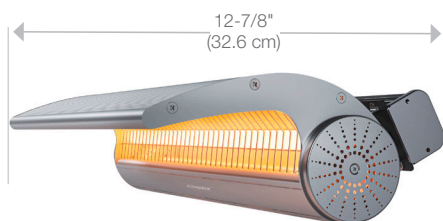
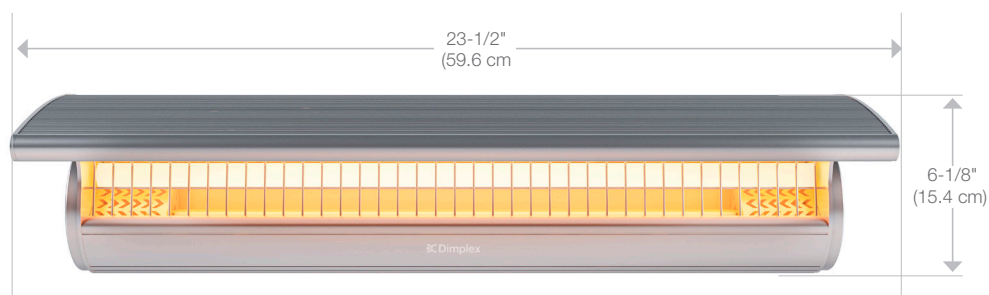
The Dimplex DSH series heaters are ideal for use in low lighting environments like restaurants and outdoor entertaining spaces. Reaching maximum heat in less than 3 seconds, this product provides premium comfort, while mirroring the quality of interior décor, outdoors. This infrared heater is compatible with wall, ceiling, and stand mounts - ceiling bracket and mounting stand sold separately.



Outdoor/Indoor Electric Infrared Heater

DSH Series

Surface Installation



Wall-mount bracket included



Junction Box



Control Display

Features

Instant Heat

Get heat on demand with a gold-tube quartz element that provides full power in under 3 seconds

Timer

To prepare ahead, each heater contains a 1, 2 & 3 hour delay timer

Waterproof

Suitable for all climates, with an IP65 rating for outdoor or indoor use

Corrosion Resistant

Built to last with anodized aluminum casing that provides a long life

Durable

Meant to keep you warm for years with up to 5,000 hours of running life

Installation Options

Includes pivoting mounting bracket for the wall, but a ceiling mount or floor stands can be purchased separately

Hardware Connection

Designed for permanent installations on a direct wired dedicated circuit

Adjustable Angle

For optimum heat, direct the unit toward the object or person you want to warm up

Remote Control (included)

Stay in control, multiple heaters can be regulated with a single remote

Automatic Standby

Unit has safety mechanism that automatically places the heater in Standby mode after 8 hours of continuous operation

Ease of Installation

Each heater comes with the element pre-installed, which eases in installation and reduces the risk of damaged, broken or misplaced elements upon delivery

Model #	Description	Installation	UPC	Lbs / Kg (packaged)	Watts	Volts	Wty ¹	Product Dimensions (WxHxD)		Carton Dimensions (WxHxD)	
								Inches	cm	Inches	cm
DSH20W	Wall-mounted IR Heater	Wall-mounting (Tower, Ceiling-mount optional)	781052136168	8.3 / 3.8 (12.3 / 5.6)	2,000	240	1 yr.	23-1/2 x 6-1/8 x 12-7/8	59.6 x 15.4 x 32.6	26 x 7-3/4 x 16-3/8	66.0 x 19.6 x 41.4
DSHSTAND	Floor-mounted Tower	Floor Stand	781052134454	44.1 / 20.0 (46.3 / 21.0)				26 x 3-1/4 x 17	66.0 x 8.1 x 43.2	28-7/8 x 4-1/8 x 21-1/2	73.4 x 10.4 x 54.6
DSHCMB	Ceiling-mount bracket	Bracket	781052135635	1.1 / 0.5 (1.5 / 0.7)				14-1/8 x 4-1/4 x 5-1/2	35.8 x 10.7 x 14.0	15-3/4 x 5-3/8 x 6-7/8	39.9 x 13.5 x 17.5

Specifications, finishes and dimensions are subject to change. ¹Limited warranty. ©2022 Glen Dimplex Americas

SE-545-R04-040822

Outdoor/Indoor Electric Infrared Heater

DSH Series

Accessories

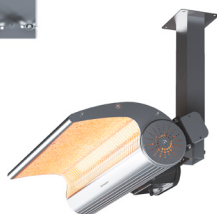


Floor-mounted Tower
(suitable for installation with 1 or 2 heaters) sold separately



Ceiling-mounting bracket
(suitable for installation with 1 or 2 heaters) sold separately

One Heater Mount



Two Heater Mount

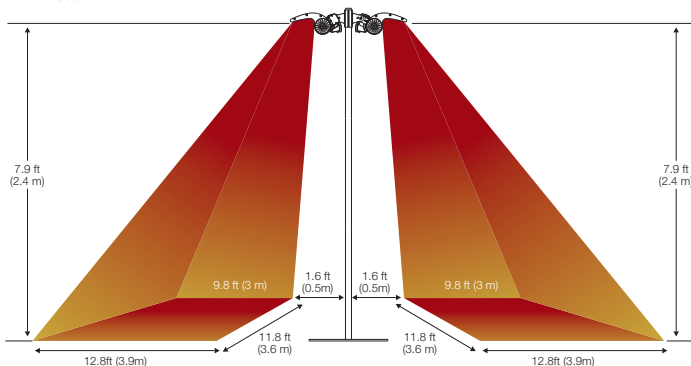


Heat Area

2000W

Indoor Heating Area

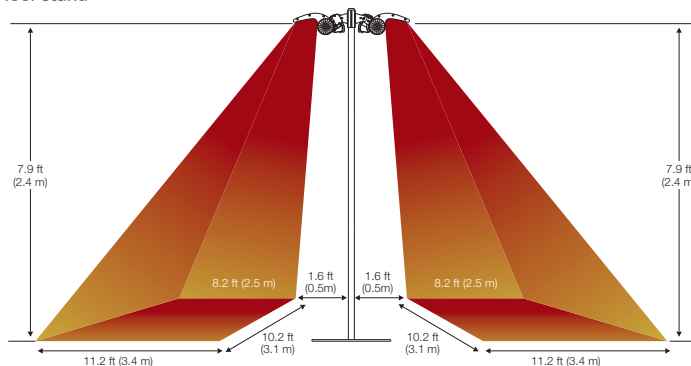
- Wall-mounted
- Floor stand



2000W

Outdoor Heating Area

- Wall-mounted
- Floor stand



Please note that the heat zone is just for a reference. The heating footprint always depends on the Installation environment and height, air flow and ambient temperatures, voltage fluctuations, radiation angle, etc. Please consider all these factors in your planning.